



## FROM THE GROUND UP

**PROTEAM® WAS ESTABLISHED IN 1987, THE RESULT OF ONE MAN'S DREAM TO GET VACUUMING OFF THE GROUND.**

When Larry Shideler founded Western Building Maintenance in 1962, he had no idea that he would eventually revolutionize the commercial cleaning industry. What he did know was that there had to be a better, more efficient way to clean carpets than with traditional upright vacuums.

In 1983, he came up with the solution: a lightweight backpack vacuum made out of PVC pipe, which was more comfortable and agile than the heavy metal shoulder-strap versions and more efficient than the uprights. Not only did it double and triple the speed of cleaning, but it removed more soil and had a better filtration system than its predecessors. His invention, which he called the QuarterVac, would become the industry's first successful commercial backpack vacuum.

With the combination of a winning product and an education-focused sales force, ProTeam ultimately succeeded in converting many in the custodial industry to a new way of vacuuming. Continuing on this success, ProTeam expanded into the residential and home professional markets in 1999. Today, the company produces a full line of residential and commercial vacuums that have evolved from years of actual testing and continual innovation. We guarantee our products are the best you can buy.

## Partners in Indoor Air Quality Education

The American Lung Association (ALA) and ProTeam are partners in a national program to educate the public about the benefits of healthy indoor air quality and ways to promote lung health.

ProTeam is collaborating with the ALA in an educational campaign designed to generate awareness and educate people about indoor air quality issues. This exclusive educational partnership recognizes the American Lung Association's mission of preventing lung disease and promoting lung health as well as ProTeam's goal of developing innovative cleaning technologies to address indoor air quality concerns.

The American Lung Association does not endorse products. For further information from the American Lung Association, call **1-800-LUNG-USA**, or visit their web site at [www.lungusa.org](http://www.lungusa.org).



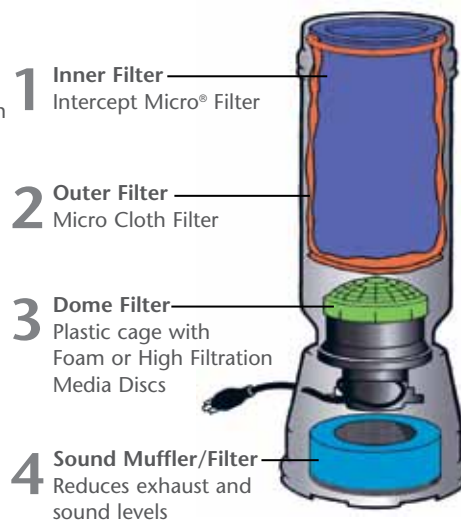
## Cleaning for Health®

### Improved Air Quality

ProTeam vacuums retrieve soil and safely contain harmful particles, preventing them from being reintroduced back into the environment.

### Filtration

ProTeam vacuums are equipped with a unique Four Level® Filtration system. This system captures tiny dust mites, bacteria, and floating particles – which can cause sick building syndrome and unhealthy air. Secondly, ProTeam's unique method of suction-vacuuming cleans carpets, hard floors, and other surfaces without stirring up dust – so the air stays cleaner, the furniture collects less dust, and operators can work without breathing unhealthy air.



**ProTeam's Four Level Filtration Systems are at least 99.77% efficient in filtering particles measuring 1 micron and larger.**

<b>Large Capacity Vacuums</b> .....	<b>2</b>
Super CoachVac®, CoachVac®	
<b>Large/Mid Capacity Vacuums</b> .....	<b>3</b>
MegaVac®, Super QuarterVac®	
<b>Mid Capacity Vacuums</b> .....	<b>4</b>
QuarterVac®, TailVac®	
<b>HEPA Vacuums</b> .....	<b>5-6</b>
QuietPro® BP HEPA, LineVacer® HEPA/ULPA, Super CoachVac HEPA, Super QuarterVac HEPA	
<b>HEPA &amp; Canister Vacuums</b> .....	<b>7</b>
QuietPro CN HEPA, RunningVac®	
<b>Foodservice Vacuums</b> .....	<b>8</b>
ProVac™ CN, ProVac BP	
<b>Specialty Vacuums</b> .....	<b>9-10</b>
GoVac™ BP, GoCartVac®, AviationVac®	
<b>Uprights</b> .....	<b>10</b>
ProForce® 1500XP, ProForce 1500	
<b>Attachment Kits</b> .....	<b>11-13</b>
<b>Individual Attachments</b> .....	<b>14-17</b>
<b>Filters</b> .....	<b>18</b>
<b>Replacement Parts</b> .....	<b>19</b>
<b>Educational Materials</b> .....	<b>19</b>
<b>Accessories</b> .....	<b>20</b>
<b>Point-of-Purchase Items</b> .....	<b>20</b>
<b>Super CoachVac/Super CoachVac HEPA/CoachVac Parts</b> .....	<b>21</b>
<b>MegaVac Parts</b> .....	<b>22</b>
<b>Super QuarterVac/Super QuarterVac HEPA Parts</b> .....	<b>23</b>
<b>QuarterVac Parts</b> .....	<b>24</b>
<b>TailVac Parts</b> .....	<b>25</b>
<b>QuietPro BP HEPA Parts</b> .....	<b>26</b>
<b>LineVacer Parts</b> .....	<b>27</b>
<b>QuietPro CN HEPA Parts</b> .....	<b>28</b>
<b>RunningVac/ProVac CN Parts</b> .....	<b>29</b>
<b>GoVac BP Parts</b> .....	<b>30</b>
<b>GoCartVac Parts</b> .....	<b>31</b>
<b>ProForce 1500XP Parts</b> .....	<b>32-33</b>
<b>ProForce 1500 Parts</b> .....	<b>34-35</b>
<b>ProVac BP/AviationVac Parts</b> .....	<b>36</b>
<b>Index</b> .....	<b>37-40</b>
<b>Sales Representatives</b> .....	<b>Inside Back Cover</b>

## Warranty Info

All ProTeam products carry an unmatched 3 year parts, labor and motor warranty. Lifetime warranty on molded body parts for backpack and canister vacuums. Please see owner's manual for complete warranty details. Battery products excluded, refer to individual products.

All prices, specifications and offers effective January 1, 2009 and are subject to change without notice. All specs are based on motor specs.

## Trademarks and Patents

ProTeam, TailVac, QuarterVac, Super CoachVac, LineVacer, ProVac, AviationVac, RunningVac, ProForce, QuietPro, GoCartVac, GoVac, Super QuarterVac, CoachVac and MegaVac, ProDuster, Cleaning for Health, Four Level, JetSweep, Intercept Micro, QuietPower, and Team Cleaning are trademarks and registered trademarks of ProTeam, Inc. E-Z Glide patent No. 5,659,923 is a trademark of ProTeam, Inc. ManageMen is a registered trademark of ManageMen in the USA. Velcro is a registered trademark of Velcro Industries in the USA.

© 2007-2009 ProTeam, Inc. All Rights Reserved.



# LARGE CAPACITY



## Super CoachVac

100653\* – Super CoachVac w/Attachment Kit B (101336) – \$519

The most powerful backpack vacuum available comes equipped with all the tools and accessories to tackle the most demanding cleaning challenges. The Super CoachVac is ideal for vacuuming schools, office buildings, healthcare facilities or any large, high-traffic area that requires extreme power and suction when deep cleaning any surface.

### Specifications

Weight:	11 lbs.
Airflow:	150 CFM
Static Lift:	100 in.
Power:	1221 W
Amperage:	10.6 A
Decibel:	66 dB
Intercept Micro Filter:	698 sq. in. / 10 qt.
Four Level Filtration:	1136 sq. in. total area

\* **Standard Configuration Kit includes:** E-Z Glide® Floor Tool w/Brush, 56" Two-Piece, Two-Bend Aluminum Wand, 5" Upholstery Tool, 3" Dust Brush, 17" Crevice Tool.

### Optional Configurations

100710	Super CoachVac w/Attachment Kit C (100077)	\$529
100709	Super CoachVac w/Attachment Kit D (100079)	539
105893	Super CoachVac w/Flooring Installation Kit A (105889)	539
105895	Super CoachVac w/Flooring Installation Kit B (105890)	529
105897	Super CoachVac w/Flooring Installation Kit C (105891)	519
101830	Super CoachVac w/Hard Surface Flooring Kit (101829)	519
106512	Super CoachVac w/1 1/2" Telescoping Wand Kit (106291)	519
106731	Super CoachVac w/1 1/4" Tapered Wand Kit (106730)	519



## CoachVac

100643\* – CoachVac w/Attachment Kit B (101336) – \$509

Powered with a motor that has been rigorously tested for decades, the CoachVac is a defining standard for many commercial cleaners who rely on its extreme durability, unparalleled filtration and exceptional product performance.

### Specifications

Weight:	11 lbs.
Airflow:	124 CFM
Static Lift:	75 in.
Power:	859 W
Amperage:	7.5 A
Decibel:	68 dB
Intercept Micro Filter:	698 sq. in. / 10 qt.
Four Level Filtration:	1136 sq. in. total area

\* **Standard Configuration Kit includes:** E-Z Glide Floor Tool w/Brush, 56" Two-Piece, Two-Bend Aluminum Wand, 5" Upholstery Tool, 3" Dust Brush, 17" Crevice Tool.

### Optional Configurations

101549	CoachVac w/Attachment Kit A (100078)	\$509
100707	CoachVac w/Attachment Kit C (100077)	519
100708	CoachVac w/Attachment Kit D (100079)	529





## MegaVac

100657\* – MegaVac w/Attachment Kit B (101336) – \$539

Utilizing our most powerful motor, the MegaVac defines industrial strength. The versatile design allows for quick conversion into a high powered blower while the huge filter capacity contains large amounts of debris. This unit is a "must have" tool in many large industrial facilities and commercial construction sites.

### Specifications

Weight: 11 lbs.  
Airflow: 150 CFM  
Static Lift: 100 in.  
Power: 1221 W  
Amperage: 10.6 A  
Decibel: 66 dB  
Intercept Micro Filter: 698 sq. in. / 10 qt.  
Four Level Filtration: 1136 sq. in. total area

\* **Standard Configuration Kit includes:** E-Z Glide Floor Tool w/Brush, 56" Two-Piece, Two-Bend Aluminum Wand, 5" Upholstery Tool, 3" Dust Brush, 17" Crevice Tool.

### Optional Configurations

101529	MegaVac w/Attachment Kit C (100077)	\$549
100717	MegaVac w/Attachment Kit D (100079)	559
105892	MegaVac w/Flooring Installation Kit A (105889)	559
105894	MegaVac w/Flooring Installation Kit B (105890)	559
105896	MegaVac w/Flooring Installation Kit C (105891)	549



## Super QuarterVac

106205\* – Super QuarterVac w/Attachment Kit B (101336) – \$519

The lightweight Super QuarterVac combines the power of the Super CoachVac in a smaller body size. Perfect for operators cleaning small to mid-sized commercial buildings and individual businesses.

### Specifications

Weight: 10 lbs.  
Airflow: 150 CFM  
Static Lift: 100 in.  
Power: 1221 W  
Amperage: 10.6 A  
Decibel: 67 dB  
Intercept Micro Filter: 496 sq. in. / 6 qt.  
Four Level Filtration: 791 sq. in. total area

\* **Standard Configuration Kit includes:** E-Z Glide Floor Tool w/Brush, 56" Two-Piece, Two-Bend Aluminum Wand, 5" Upholstery Tool, 3" Dust Brush, 17" Crevice Tool.

### Optional Configurations

106206	Super QuarterVac w/Attachment Kit A (100078)	\$519
106513	Super QuarterVac w/1½" Telescoping Wand Kit (106291)	519

# MID CAPACITY



## QuarterVac

101245\* – QuarterVac w/Attachment Kit B (101336) – \$509

The first vacuum ever produced by ProTeam is still a favorite of many Jan/San professionals. The light weight versatility and compact construction of the QuarterVac is perfect for operators cleaning smaller commercial buildings, hotels, apartments or individual businesses.

### Specifications

Weight:	9 lbs.
Airflow:	115 CFM
Static Lift:	65 in.
Power:	896 W
Amperage:	7.9 A
Decibel:	68 dB
Intercept Micro Filter:	496 sq. in. / 6 qt.
Four Level Filtration:	791 sq. in. total area

**\* Standard Configuration Kit includes:** E-Z Glide Floor Tool w/Brush, 56" Two-Piece, Two-Bend Aluminum Wand, 5" Upholstery Tool, 3" Dust Brush, 17" Crevice Tool.

### Optional Configurations

101164	QuarterVac w/Standard 1 1/4" Kit (100090)	\$499
101548	QuarterVac w/Attachment Kit A (100078)	509
101247	QuarterVac w/Attachment Kit C (100077)	519
101248	QuarterVac w/Attachment Kit D (100079)	519
101250	QuarterVac w/Turbo Brush 1 1/4" Kit (100091)	549
106515	QuarterVac w/1 1/2" Telescoping Wand Kit (106291)	509



## TailVac

101550\* – TailVac w/Attachment Kit B, 1 1/2" hose (101336) – \$519

Our lightest vacuum available, the TailVac is a preferred tool of professional maid services across the country. This unit is powerful for tough jobs and perfect for quick cleaning or detail jobs. Plus, you can wear it around your waist, carry it by the heavy duty handle or sling it over your shoulder for easy maneuverability.

### Specifications

Weight:	8 lbs.
Airflow:	112 CFM
Static Lift:	63 in.
Power:	788 W
Amperage:	6.6 A
Decibel:	65 dB
Intercept Micro Filter:	496 sq. in. / 6 qt.
Four Level Filtration:	781 sq. in. total area

**\* Standard Configuration Kit includes:** E-Z Glide Floor Tool w/Brush, 56" Two-Piece, Two-Bend Aluminum Wand, 5" Upholstery Tool, 3" Dust Brush, 17" Crevice Tool.

### Optional Configurations

101293	TailVac w/Standard 1 1/4" Kit (101324)	\$499
101528	TailVac w/Attachment Kit C, 1 1/2" hose (100077)	529
105030	TailVac w/Deluxe 1 1/4" Kit (103090)	519
106514	TailVac w/1 1/2" Telescoping Wand Kit (106291)	519



## QuietPro BP HEPA

105732\* – QuietPro BP HEPA w/Attachment Kit B (101336) – \$599

The QuietPro BP HEPA with QuietPower® Technology delivers high performance and exceptional cleaning strengths for environments where low sound levels are critical. Never worry about disrupting building occupants during regular business hours again.

### Specifications

Weight: 11 lbs.

Power Mode (High):

Airflow: 106 CFM

Static Lift: 82 in.

Power: 966 watt

Amperage: 8.6 A

Decibel: 60 dB

Quiet Mode (Low):

Airflow: 74 CFM

Static Lift: 45 in.

Power: 351 watt

Amperage: 5 A

Decibel: 51 dB

Intercept Micro Filter: 496 sq. in. / 6 qt.

Four Level Filtration w/HEPA: 845 sq. in. total area

### HEPA Filtration

**HEPA:** 99.97% at 0.3 microns at 80 sq. in. filtration area

\* **Standard Configuration Kit includes:** E-Z Glide Floor Tool w/Brush, 56" Two-Piece, Two-Bend Aluminum Wand, 5" Upholstery Tool, 3" Dust Brush, 17" Crevice Tool.

### Optional Configurations

105733	QuietPro BP HEPA w/Attachment Kit A (100078)	\$599
106518	QuietPro BP HEPA w/1 1/2" Telescoping Wand Kit (106291)	599



## LineVacer HEPA/ULPA

100277\* – LineVacer HEPA w/High Filtration Vac Kit 1 1/2" (100163) – \$739

When clean air in a controlled environment is critical, the LineVacer offers benefits never found before in the cleaning industry. Our industrial HEPA/ULPA vacuum is ideal for medical facilities, clean rooms, computer labs or highly sensitive areas with delicate equipment.

### Specifications

Weight: 13 lbs.

Airflow: 124 CFM

Static Lift: 75 in.

Power: 859 W

Amperage: 7.5 A

Decibel: 64 dB

Intercept Micro Filter: 698 sq. in. / 10 qt.

Four Level Filtration w/HEPA: 2283 sq. in. total area

Four Level Filtration w/ULPA: 3232 sq. in. total area

### True HEPA/ULPA Filtration

**HEPA:** 99.97% at 0.3 microns at 1197 sq. in. filtration area

**ULPA:** 99.999+% at 0.12 microns at 2146 sq. in. filtration area

\* **Standard Configuration Kit includes:** 56" Two-Piece Aluminum Wand w/Button Lock, 5" Upholstery Tool, 3" Dust Brush, 14" Carpet Tool w/Scallops, 36" One-Bend Bulk Pick-Up Tool.

**Note:** cart version of the LineVacer does not include backplate for use as a backpack.

### Optional Configurations

100280	LineVacer ULPA w/High Filtration Vac Kit (100163)	\$909
100279	LineVacer HEPA Cart w/High Filtration Vac Kit (100163)	839
100282	LineVacer ULPA Cart w/High Filtration Vac Kit (100163)	1019



## Super CoachVac HEPA

106573\* – Super CoachVac HEPA w/Attachment Kit B (101336) – \$529

The most powerful backpack vacuum on the market is now available with HEPA Level Filtration. The Super CoachVac HEPA is ideal for vacuuming high square-footage areas that require the utmost cleanliness.

### Specifications

Weight: 11 lbs.  
 Airflow: 150 CFM  
 Static Lift: 100 in.  
 Power: 1221 W  
 Amperage: 10.6 A  
 Decibel: 66 dB  
 Intercept Micro Filter: 698 sq. in. / 10 qt.  
 Four Level Filtration w/HEPA: 1190 sq. in. total area

### HEPA Filtration

**HEPA:** 99.97% at 0.3 microns at 80 sq. in. filtration area

**\* Standard Configuration Kit includes:** E-Z Glide Floor Tool w/Brush, 56" Two-Piece, Two-Bend Aluminum Wand, 5" Upholstery Tool, 3" Dust Brush, 17" Crevice Tool.

### Optional Configurations

106580 Super CoachVac HEPA w/1½" Telescoping Wand Kit (106291) \$529



## Super QuarterVac HEPA

106577\* – Super QuarterVac HEPA w/Attachment Kit B (101336) – \$529

The smaller yet equally powerful sibling of the Super CoachVac backpack vacuum, is now available with HEPA Level Filtration. The quality built Super QuarterVac HEPA is a formidable tool for battling poor indoor air quality.

### Specifications

Weight: 10 lbs.  
 Airflow: 150 CFM  
 Static Lift: 100 in.  
 Power: 1221 W  
 Amperage: 10.6 A  
 Decibel: 67 dB  
 Intercept Micro Filter: 496 sq. in. / 6 qt.  
 Four Level Filtration w/HEPA: 845 sq. in. total area

### HEPA Filtration

**HEPA:** 99.97% at 0.3 microns at 80 sq. in. filtration area

**\* Standard Configuration Kit includes:** E-Z Glide Floor Tool w/Brush, 56" Two-Piece, Two-Bend Aluminum Wand, 5" Upholstery Tool, 3" Dust Brush, 17" Crevice Tool.

### Optional Configurations

106579 Super QuarterVac HEPA w/1½" Telescoping Wand Kit (106291) \$529





## QuietPro CN HEPA

106207\* – QuietPro CN HEPA w/Attachment Kit B (101336) – \$649

The QuietPro CN HEPA vacuum with Quiet Power Technology delivers high performance where low sound levels are critical. With a filter capacity four times the size of standard uprights, the QuietPro CN HEPA provides maximum cleaning ability.

### Specifications

Weight 12 lbs.

Power Mode (High):

Airflow: 124 CFM  
Static Lift: 75 in.  
Power: 859 W  
Amperage: 7.5 A  
Decibel: 55 dB

Quiet Mode (Low):

Airflow: 85 CFM  
Static Lift: 38 in.  
Power: 282 W  
Amperage: 4.3 A  
Decibel: 47 dB

Intercept Micro Filter: 698 sq. in. / 10 qt.

Four Level Filtration w/HEPA: 2188 sq. in. total media

### HEPA Filtration

HEPA: 99.97% at 0.3 microns at 1170 sq. in. filtration area

\* **Standard Configuration Kit includes:** E-Z Glide Floor Tool w/Brush, 56" Two-Piece, Two-Bend Aluminum Wand, 5" Upholstery Tool, 3" Dust Brush, 17" Crevice Tool.

### Optional Configurations

106208	QuietPro CN HEPA w/High Filtration Vac Kit (100163)	\$649
106517	QuietPro CN HEPA w/1½" Telescoping Wand Kit (106291)	649

## RunningVac

106890\* – RunningVac w/Attachment Kit B (101336) – \$579

With the same durable construction found in all ProTeam vacuums, the RunningVac provides exceptional cleaning strength unmatched by traditional canisters. This high performance speed canister is the perfect solution for increasing productivity when a canister is needed.

### Specifications

Weight: 12 lbs.  
Airflow: 150 CFM  
Static Lift: 100 in.  
Power: 1221 W  
Amperage: 10.6 A  
Decibel: 66 dB  
Intercept Micro Filter: 698 sq. in. / 10 qt.  
Four Level Filtration: 1045 sq. in. total area

\* **Standard Configuration Kit includes:** E-Z Glide Floor Tool w/Brush, 56" Two-Piece, Two-Bend Aluminum Wand, 5" Upholstery Tool, 3" Dust Brush, 17" Crevice Tool.

### Optional Configurations

106891	RunningVac w/Attachment Kit C (100077)	\$579
106893	RunningVac w/Attachment Kit A (100078)	579
106892	RunningVac w/Attachment Kit D (100079)	589
106894	RunningVac w/1½" Telescoping Wand Kit (106291)	579



**ProVac CN** (formerly ProClean)  
103220\* – ProVac CN w/Restaurant Kit (100727) – \$619

The ProVac CN meets the high demands of the foodservice industry by providing exceptional cleaning strength without belts, beater bars or brushes. A 10 qt. filter provides maximum cleaning ability and is backed with an unbeatable five-year motor warranty.

**Specifications**

Weight:	12 lbs.
Airflow:	150 CFM
Static Lift:	100 in.
Power:	1221 W
Amperage:	10.6 A
Decibel:	66 dB
Intercept Micro Filter:	698 sq. in. / 10 qt.
Four Level Filtration:	1045 sq. in. total area

**\* Standard Configuration Kit includes:** 14" Hard Floor Tool w/Nylon Brush, 14" Carpet Tool w/Scallops, 5" Upholstery Tool, 3" Dust Brush, 11" Crevice Tool, 56" Two-Piece Aluminum Wand w/Button Lock.



**ProVac BP**  
100729\* – ProVac BP w/Restaurant Kit (100727) – \$559

The ProVac BP is designed specifically to triumph over the demands of the foodservice and hospitality industry. The unit is virtually indestructible – without belts, beater bars or brushes – and is backed with an unbeatable five-year motor warranty when purchased with the restaurant kit. The ProVac BP rises to any foodservice challenge.

**Specifications**

Weight:	9 lbs.
Airflow:	124 CFM
Static Lift:	75 in.
Power:	859 W
Amperage:	7.5 A
Decibel:	66 dB
Intercept Micro Filter:	496 sq. in. / 6 qt.
Four Level Filtration:	791 sq. in. total area

**\* Standard Configuration Kit includes:** 14" Hard Floor Tool w/Nylon Brush, 14" Carpet Tool w/Scallops, 5" Upholstery Tool, 3" Dust Brush, 11" Crevice Tool, 56" Two-Piece Aluminum Wand w/Button Lock.

**Optional Configurations**

103246	ProVac BP w/Attachment Kit B (101336)	\$519
100829	ProVac BP w/Attachment Kit A (100078)	519
106519	ProVac BP w/1 1/2" Telescoping Wand Kit (106291)	519

**LITHIUM ION**  
BATTERY TECHNOLOGY



## GoVac BP

106803\* – GoVac BP w/Attachment Kit (106844), Battery & Charger – \$3,449

Go anywhere with the GoVac BP. Freedom to clean without the barrier of power cords has been a demand of professional cleaners for years. ProTeam's GoVac BP offers extreme versatility and power for every cleaning situation. From detail cleaning in stairwells and elevators to offices, schools and commercial buildings, this unit performs with ease and convenience.

### Specifications

Weight: 22 lbs.  
Airflow: 65 CFM  
Static Lift: 70 in.  
Motor: 36 V  
Decibel: 69 dB  
Intercept Micro Filter: 496 sq. in. / 6 qt.  
Four Level Filtration: 791 sq. in. total area

Battery Type: Lithium Ion  
Continuous Run Time: 50 minutes  
Full Charge Time: 3 hours

### Warranty

1 year prorated on batteries. 1 year on battery charger.  
3 years on motor. Lifetime on vacuum body.

**Note:** Please refer to Owner's Manual for complete warranty details.

**\*Standard Configuration Kit includes:** 13" Curved Chrome Wand w/Button Lock, 24"– 40" Chrome Telescoping Wand w/Button Lock, 13" Crevice Tool, 5 1/2" Upholstery Tool, 2 1/2" Rectangular Dust Brush 90/180° Swivel, 10" Multi-Surface Floor Tool, Cuff Adapter.

### Options

106621	GoVac BP Battery Assembly	\$2,599
106603	GoVac BP Charger	349

**BATTERY**  
TECHNOLOGY



## GoCartVac

106209\* – GoCartVac w/GoCart Kit (104885) – \$3,449

With the ability to plug into a wall socket or run off the large battery reserve, the GoCartVac allows cleaning professionals the ability to clean anywhere, anytime, without the limitations of cords or the concern of noisy equipment. Go anywhere with the GoCartVac.

### Specifications

Airflow: 82 CFM  
Static Lift: 67 in.  
Motor: 36 V  
Amperage: 13.4 A  
Decibel: 58 dB  
Intercept Micro Filter Media: 496 sq. in./791 sq. in. total area

Battery Type: Sealed (non-spillable), Lead Acid  
Continuous Run Time: 1 hour  
Full Charge Time  
(w/36V-18.5 amp battery charger): 3.5 hours

### Warranty

6 months on battery.  
1 year on battery charger.  
3 years on motor.  
Lifetime on vacuum body.

**Note:** Please refer to Owner's Manual for complete warranty details.

**\* Standard Configuration Kit includes:** 24"– 40" Chrome Telescoping Wand w/Button Lock, 10" Multi-Surface Floor Tool, 13" Crevice Tool, 5 1/2" Upholstery Tool w/Removable Brush, 2 1/2" Rectangular Dust Brush 90/180° Swivel.



AviationVac

106542\* – AviationVac w/Aviation 1 1/2" Kit #1 (106502) – \$609

Designed exclusively for the transportation industry, the AviationVac utilizes the same 400 Hz power system used on transport vehicles without the need for bulky adaptors. The lightweight wand and ergonomic backplate provides a highly efficient tool for cleaning up in a hurry.

Specifications

Weight:	10 lbs.
Airflow:	95 CFM
Static Lift:	91 in.
Power:	909 W
Amperage:	8.1 A
Decibel:	68 dB
Intercept Micro Filter:	496 sq. in. / 6 qt.
Four Level Filtration:	791 sq. in. total area

\* Standard Configuration Kit includes: 49" One-Piece, Two-Bend Aluminum Wand, 17" Crevice Tool, 3" Horsehair Dust Brush, 5" Upholstery Tool, 12" Aluminum Gulper Floor Tool.

Optional Configuration

103024 AviationVac w/Aviation 1 1/4" Kit #2 (103222) \$589



ProForce 1500XP and ProForce 1500

104301 – ProForce 1500XP – \$549 104300 – ProForce 1500 – \$459

Our top-of-the-line ProForce uprights have evolved into superior cleaning machines. With many exclusive performance features, ergonomic designs and integrated HEPA media, this unit sets the standard in upright technology.

The powerful ProForce contains a high-performance dual-motor system and a low profile, L-shaped head perfect for vacuuming under and around furniture.

ProForce 1500XP models are equipped with premium quality on-board tools including a lightweight plastic wand with 10.5' super stretch-hose.

ProForce Specifications

Weight:	ProForce 1500XP – 18 lbs. ProForce 1500 – 17 lbs.
Airflow:	96 CFM
Static Lift:	84 in.
Power:	1320 Watt Dual Motor
Amperage:	11A
Decibel:	67 dB
Intercept Micro Filter:	248 sq. in. / 3.25 qt.
Four Level Filtration w/HEPA Media:	393 sq. in. total media



## Commercial Two-Piece 1½" Wand Kit #1

### 1½" Attachments with a Two-piece Wand

#### Each kit contains:

Two-piece, Two-bend Aluminum Wand – 56" (101338)  
 Crevice Tool – 17" (100108)  
 Dust Brush – 3" (100110)  
 Upholstery Tool – 5" (100115)



### And a choice of the following floor tools:

	Part No.	Description	List Price
A.	100078	14" Floor Tool w/Scallops (100147)	\$77.63
B.	101336	14" E-Z Glide Floor Tool w/Brush (101446)	88.88
C.	100077	11" Floor Tool w/Adjustable Brush (100083)	96.45
D.	100079	16" Floor Tool w/Adjustable Brush (100092)	97.50



## Commercial One-Piece 1½" Wand Kit #2

### 1½" Attachments with a One-piece Wand

#### Each kit contains:

One-piece, Two-Bend Aluminum Wand – 56" (100102)  
 Crevice Tool – 17" (100108)  
 Dust Brush – 3" (100110)  
 Upholstery Tool – 5" (100115)

### And a choice of the following floor tools:

	Part No.	Description	List Price
	100650	14" Floor Tool w/Scallops (100147)	\$77.63
	101337	14" E-Z Glide Floor Tool w/Brush (101446)	88.88
	100711	11" Floor Tool w/Adjustable Brush (100083)	96.45
	100712	16" Floor Tool w/Adjustable Brush (100092)	103.00

## Commercial 1½" Telescoping Wand Kit #3

### 1½" Attachments with a Telescoping Wand

#### Each kit contains:

1½" 42 to 59" Aluminum Telescoping Wand (106290)  
 Crevice Tool – 17" (100108)  
 Dust Brush – 3" (100110)  
 Upholstery Tool – 5" (100115)  
 14" EZ Glide Floor Tool w/Brush (101446)

	Part No.	Description	List Price
	106291	1½" Telescoping Wand Kit	\$93.63

## Standard and Deluxe 1¼" Kits

#### Each kit contains:

Chrome Telescoping Wand – 24" to 40" w/Button Lock (106343)  
 Curved Chrome Wand – 1¼" x 13" w/Button Lock (103505)  
 Reducer Cuff\* (101092)  
 Crevice Tool – 13" (103086)  
 Cuff Adapter – 1¼" x 1¼" (103099)  
 Dust Brush, Rectangular 90/180° Swivel – 2½" (103089)  
 Upholstery Tool – 5½" (103087)  
 w/Removable Brush (103088)

#### Standard kit contains:

A. Multi-Surface Floor Tool – 10" (106709)

#### Deluxe kit contains:

B. Natural Fiber Hard Floor Tool – 12" (103084)  
 C. Carpet Tool w/Scallops 12" (103085)

\*Reducer cuff is not included with the TailVac Standard/Deluxe 1¼" Kit

	Part No.	Description	List Price
	101324	TailVac Standard 1¼" Attachment Kit	\$66.38
	100090	Standard 1¼" Attachment Kit	68.50
	103090	TailVac Deluxe 1¼" Attachment Kit	88.88
	103467	Deluxe 1¼" Attachment Kit	91.80

## Flooring Installation 1½" Kits

#### Each Flooring Installation Kit contains:

Two-piece, Two-bend Aluminum Wand – 56" (101338)  
 Crevice Tool – 17" (100108)  
 Dust Brush – 3" (100110)

### And a choice of the following:

	Part No.	Description	List Price
	105889	Hard Floor Tool w/Scalloped Felt Brush (100144) and Hard Floor Tool w/Horse Hair Brush (100614)	\$107.60
	105890	JetSweep® 20 Hard Floor Tool w/Nylon Brush (101613)	98.63
	105891	Hard Floor Tool w/Horse Hair Brush (100614)	91.80

# ATTACHMENT KITS

## Hard Surface Flooring 1½" Kit

### Each kit contains:

Two-piece, Two-bend Aluminum Wand – 56" (101338)  
 Crevice Tool – 28" (100109)  
 Dust Brush – 3" (100110)  
 Upholstery Tool – 5" (100115)  
 14" Hard Floor Tool w/Felt Brush – Scalloped & Flat (106194)

Part No.	Product Name	List Price
101829	Hard Surface Flooring 1½" Attachment Kit	\$92.40

## Turbo Brush 1¼" Kits

### Each kit (101346) contains:

TailVac Standard 1¼" Kit (101324)  
 11" Turbo Brush Tool – 1¼" (100117)

Part No.	Product Name	List Price
101346	TailVac Standard 1¼" Attachment Kit with Turbo Brush	\$135.00

### Each kit (100091) contains:

Standard 1¼" Kit (100090)  
 11" Turbo Brush Tool – 1¼" (100117)

Part No.	Product Name	List Price
100091	Standard 1¼" Attachment Kit with Turbo Brush	\$135.00

### Each kit (100135) contains:

11" Turbo Brush Tool – 1¼" (100117)  
 54" One-Bend Chrome Tapered Wand – 1½" to 1¼" (100136)

Part No.	Product Name	List Price
100135	Turbo Brush with Wand	\$99.50

## Restaurant 1½" Kit

### Each kit contains:

Two-Piece Aluminum Wand w/Button Lock – 56" (101338)  
 Carpet Tool w/Scallops 14" (100147)  
 Dust Brush – 3" (100110)  
 Upholstery Tool – 5" (100115)  
 Crevice Tool 11" (100107)  
 Hard Floor Tool w/Nylon Brush – 14" (100623)  
 Note: Extra 10-pack 496 sq. in. Intercept Micro Filters, extra cloth filter and 5-year motor warranty included with purchase of ProVac BP and ProVac CN with Restaurant Kit (100729).

Part No.	Product Name	List Price
100727	Restaurant 1½" Attachment Kit	\$100.62

## Aviation 1½" Kit #1

### Each kit contains:

Dust Brush, Horsehair – 3" (100110)  
 Crevice Tool – 17" (100108)  
 Aluminum One-Piece, Two-Bend Wand – 49" (106293)  
 Upholstery Tool – 5" (100115)  
 Aluminum Gulper Floor Tool – 12" (100155)

Part No.	Product Name	List Price
106502	Aviation 1½" Attachment Kit	\$119.63

## Aviation 1¼" Kit #2

### Each kit contains:

Curved Chrome Wand w/Button Lock – 1¼" x 13" (103505)  
 Crevice Tool – 13" (103086)  
 Upholstery Tool – 5½" (103087)  
 w/Removable Brush (103088)  
 Dust Brush, Rectangular 90/180° Swivel – 2½" (103089)  
 Cuff Adapter – 1¼" x 1¼" (103099)  
 Carpet Tool w/Scallops 12" (103085)  
 Chrome Telescoping Wand w/Button Lock – 24" to 40" (106343)

Part No.	Product Name	List Price
103222	Aviation 1¼" Attachment Kit	\$66.38

**GoVac BP 1 1/4" Kit****Each kit contains:**

Chrome Telescoping Wand – 24"– 40" w/Button Lock (106343)  
 Multi-Surface Floor Tool – 10" (106709)  
 Crevice Tool – 13" (103086)  
 Upholstery Tool – 5 1/2" (103087) w/Removable Brush (103088)  
 Dust Brush, Rectangular 90/180° Swivel – 2 1/2" (103089)  
 Curved Chrome Wand – 13" (100167)  
 Cuff Adapter – 1 1/4" x 1 1/4" (103099)

Part No.	Product Name	List Price
<b>106844</b>	GoVac BP Toolkit	<b>\$76.76</b>

**GoCartVac 1 1/4" Kit****Each kit contains:**

Chrome Telescoping Wand – 24"– 40" w/Button Lock (106343)  
 Multi-Surface Floor Tool – 10" (106709)  
 Crevice Tool – 13" (103086)  
 Upholstery Tool – 5 1/2" (103087) w/Removable Brush (103088)  
 Dust Brush, Rectangular 90/180° Swivel – 2 1/2" (103089)

Part No.	Product Name	List Price
<b>104885</b>	1 1/4" Attachments with a Telescoping Wand	<b>\$60.60</b>

**High Filtration Vac 1 1/2" Kit****Each kit contains:**

Two-Piece Aluminum Wand  
 w/Button Lock – 56" (101338)  
 Carpet Tool w/Scallops – 14" (100147)  
 Dust Brush – 3" (100110)  
 Upholstery Tool – 5" (100115)  
 One-Bend Bulk Pick-Up Tool – 36" (100150)

Part No.	Product Name	List Price
<b>100163</b>	High Filtration 1 1/2" Attachment Kit	<b>\$86.25</b>

**Sidewinder 1 1/2" Brush Kit****Each kit contains:**

Two-Piece Aluminum Wand – 59" (105693)  
 Horsehair Dust Brush – 8" (106793)

Part No.	Product Name	List Price
<b>106816</b>	Sidewinder 1 1/2" Attachment Kit	<b>\$106.05</b>

**Tapered 1 1/4" Wand Kit****Each kit contains:**

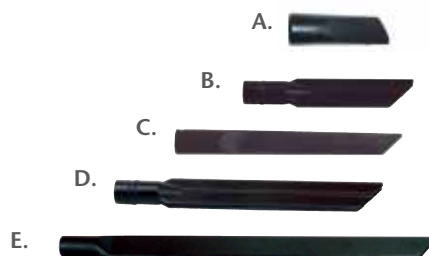
One-Bend Chrome Tapered Wand – 54" (100136)  
 Multi-Surface Floor Tool – 10" (106709)  
 Crevice Tool – 17" (100108)  
 Upholstery Tool – 5" (100115)  
 Dust Brush – 3" (100110)

Part No.	Product Name	List Price
<b>106730</b>	Tapered Wand 1 1/4" Attachment Kit	<b>\$78.60</b>

# INDIVIDUAL ATTACHMENTS

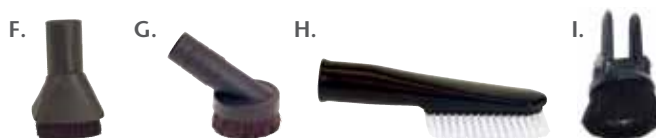
## Crevice Tools

	No.	Product Name	Size	List Price
A.	104832	Replacement Crevice Tool (ProForce 1500XP)	1 1/2"	\$2.60
B.	100107	11" Crevice Tool	1 1/2"	6.47
C.	103086	13" Crevice Tool	1 1/4"	5.58
D.	100108	17" Crevice Tool	1 1/2"	8.72
E.	100109	28" Crevice Tool	1 1/2"	15.75



## Dust Brushes

	No.	Product Name	Size	List Price
F.	103089	2 1/2" Rectangular 90/180° Swivel	1 1/4"	\$6.70
G.	100110	3" Dust Brush w/Reducer	1 1/2"	7.83
H.	102659	5" Long Dust Brush	1 1/4"	11.47
I.	104833	Combo Upholstery/Dust Brush (ProForce 1500XP)	1 1/4"	19.62



## Upholstery Tools

	No.	Product Name	Size	List Price
J.	103087	5 1/2" Upholstery Tool (Includes Removable Brush No.103088)	1 1/4"	\$6.70
K.	100115	5" Upholstery Tool	1 1/2"	11.25



## Bulk Pick-Up Tools

	No.	Product Name	Size	List Price
L.	100946	27" Straight Bulk Pick-Up Tool	1 1/2"	\$15.75
M.	100150	36" One-Bend Bulk Pick-Up Tool	1 1/2"	16.99
N.	100151	42" One-Bend Bulk Pick-Up Tool	1 1/2"	30.04



## Pipe Cleaner Tools

	No.	Product Name	Size	List Price
O.	100113	1" to 4" Overhead Pipe Cleaner (Includes Reducer Cuff)	1 1/2"	\$58.51
P.	100114	4" to 8" Overhead Pipe Cleaner (Includes Reducer Cuff)	1 1/2"	75.15

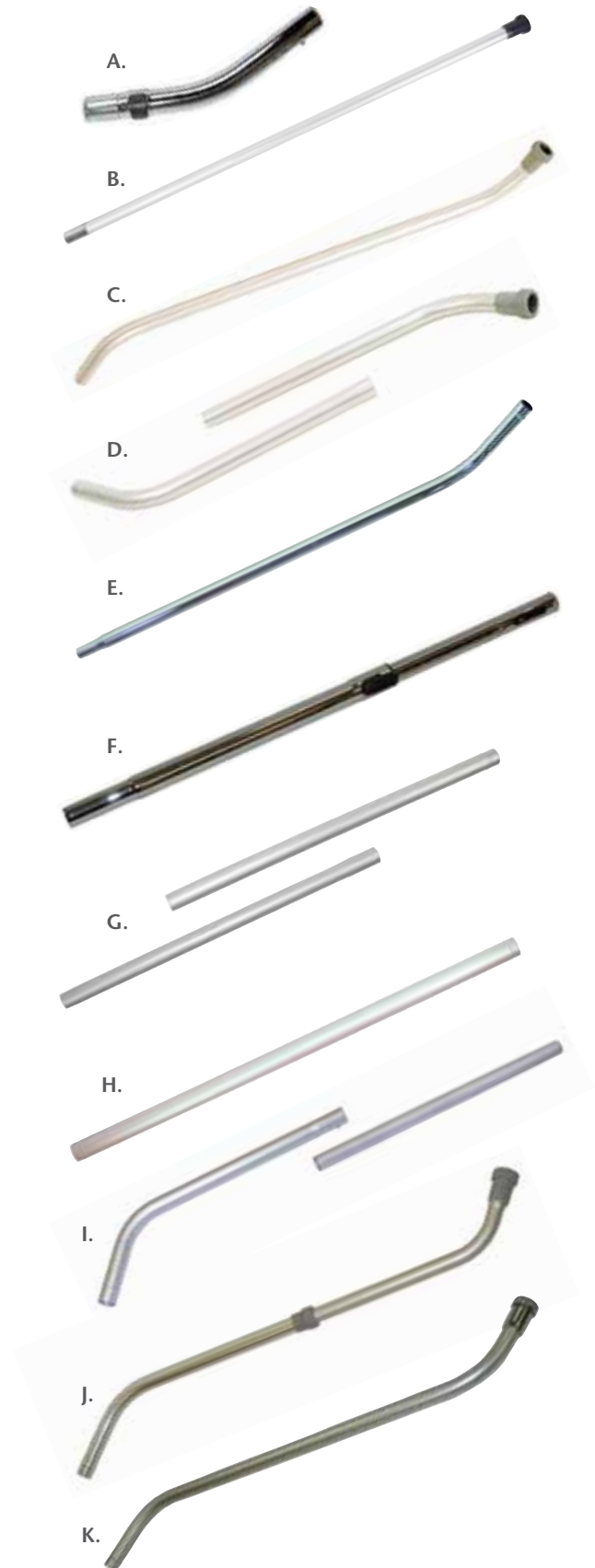




## Wands











	No.	Product Name	Size	List Price
A.	103505	13" Curved Chrome Wand w/Button Lock	1 1/4"	\$15.96
	100167	13" Curved Chrome Wand (Not Shown)	1 1/4"	15.68
B.	100104	60" Straight Extension* Aluminum Wand	1 1/2"	53.95
C.	100102	56" One-Piece, Two-Bend Aluminum Wand*	1 1/2"	47.00
D.	101338	56" Two-Piece, Two-Bend Aluminum Wand w/Button Lock*	1 1/2"	50.63
E.	100136	54" One-Bend Chrome Tapered Wand for 1 1/4" Turbo Brush	1 1/2" - 1 1/4"	36.30
F.	106343	24" to 40" Chrome Telescoping Wand w/Button Lock	1 1/4"	28.13
	100082	24" to 40" Chrome Telescoping Wand (Not shown)	1 1/4"	28.67
G.	105693	59" Two-Piece Friction Fit Aluminum Sidewinder Straight Wand	1 1/2"	62.75
H.	105695	59" One-Piece Friction Fit Aluminum Sidewinder Straight Wand	1 1/2"	52.60
I.	102266	54" Two-Piece Friction Fit One Bend Aluminum Wand with Button Lock	1 1/2"	49.44
J.	106290	42" to 59" Aluminum Telescoping Wand	1 1/2"	62.42
K.	106293	49" One-Piece, Two-Bend Aluminum Wand w/Aluminum Coupling	1 1/2"	57.22

\*Wands come complete with tool couplings






# INDIVIDUAL ATTACHMENTS

## Carpet Floor Tools

Wand Diameter	Length	Product Name	Part No.	List Price	Photo
1 1/4"	11"	<b>Turbo Brush</b> Ideal use: medium to high pile carpeting. Only use with friction fit wand 106343 or 100136. Not for use with SuperCoach, MegaVac or ProVac CN.	100117	\$77.20	
1 1/4"	12"	<b>Floor Tool w/Scallops</b> Ideal use: low to medium pile carpeting. Only use with friction fit wand 106343 or 100136.	103085	25.88	
1 1/2"	12"	<b>Paddle Tool</b> Ideal use: hard to reach areas on airplanes, under seats, desks, pews, stadium seats, etc.	100730	27.01	
1 1/2"	11"	<b>Turbo Brush</b> Ideal use: medium to high pile carpeting. Only use with friction fit wand 102266.	103608	77.20	
1 1/2"	11"	<b>Floor Tool w/Adjustable Nylon Brush</b> Ideal use: medium pile and Berber carpet.	100083	39.38	
1 1/2"	14"	<b>Floor Tool w/Scallops</b> Ideal use: low to medium pile carpeting.	100147	31.50	
1 1/2"	15"	<b>JetSweep 15 Carpet Tool</b> Larger neck opening for larger debris. Only use with friction fit wand 102266.	103032	47.25	
1 1/2"	15"	<b>15" Sidewinder® Carpet Tool</b> Ideal use: along baseboards and crevices on low pile carpet. Only use with wand #105693 or #105695.	106245	47.85	
1 1/2"	18"	<b>18" Sidewinder Carpet Tool</b> Ideal use: along baseboards and crevices on low pile carpet. Only use with wand #105693 or #105695.	105691	47.85	
1 1/2"	16"	<b>Floor Tool w/Adjustable Nylon Brush</b> Ideal use: medium pile and Berber carpet. More efficient for larger areas.	100092	42.75	

## Multi-Surface Floor Tools

Wand Diameter	Length	Product Name	Part No.	List Price	Photo
1 1/4"	10"	<b>Multi-Surface Floor Tool</b> Ideal use: low pile carpet and hard surfaces. Lever on top of tool lowers brush and duster strip for hard surfaces. Use with friction fit wand 106343 or 100136.	106709	\$26.26	
1 1/2"	12"	<b>Gulper Aluminum Floor Tool</b> Ideal use: low pile and hard surfaces. Best for larger debris.	100155	42.80	
1 1/2"	14"	<b>E-Z Glide w/Nylon Brush</b> Ideal use: commercial, medium pile carpet and durable flooring. Not recommended for delicate finishes.	101446	47.25	

## Hard Floor Tools

Wand Diameter	Length	Product Name	Part No.	List Price	Photo
1 1/4"	12"	<b>Natural Fiber Hard Floor Tool</b> Ideal use: tile, mable, vinyl, linoleum, wood. Best for floors without a high gloss finish. Only use with friction fit wand 106343 or 100136.	103084	\$29.25	
1 1/2"	14"	<b>Hard Floor Tool w/Straight Felt Brush</b> Ideal use: floors with delicate or high polished finishes.	100143	45.01	
1 1/2"	14"	<b>Hard Floor Tool w/Scalloped Felt Brush</b> Ideal use: floors with delicate or high polished finishes.	100144	45.01	
1 1/2"	14"	<b>Hard Floor Tool w/Nylon Brush</b> Ideal use: tile, marble, vinyl, linoleum, wood. Best for floors without a high gloss finish.	100623	45.01	
1 1/2"	14"	<b>Hard Floor Tool w/Horse Hair Brush</b> Ideal use: with floors with high gloss finish.	100614	48.38	
1 1/2"	14"	<b>Hard Floor Tool w/Felt Brush – Scalloped &amp; Flat</b> Ideal use: hardwood floors.	106194	45.81	
1 1/2"	8"	<b>8" Sidewinder Hard Floor Tool w/ Horse Hair Brush</b> Ideal use: hard to reach areas, walls, ceilings, corners, baseboards, vents, fans and moldings. Use only with wand #105693 or #105695.	106793	62.60	
1 1/2"	15"	<b>15" Sidewinder Hard Floor Tool w/Nylon Brush</b> Ideal use: hard to reach areas, walls, ceilings, corners, baseboards, vents, fans and moldings. Use only with wand #105693 or #105695.	106246	49.99	
1 1/2"	18"	<b>18" Sidewinder Hard Floor Tool w/Nylon Brush</b> Ideal use: hard to reach areas, walls, ceilings, corners, baseboards, vents, fans and moldings. Use only with wand #105693 or #105695.	105692	54.99	
1 1/2"	20"	<b>JetSweep 20 Hard Floor Tool w/Nylon Brush</b> Ideal use: dust mop type of applications. Use only with Super CoachVac, Super QuarterVac, MegaVac, ProVac CN and RunningVac.	101613	66.38	

Note: Additional specialty attachments may be available upon request.  
Contact Customer Service. All attachments are non-metallic unless otherwise noted.

# FILTERS

## Intercept Micro Filters

Thicker, won't shred, treated with antimicrobial organic agent. Double-pleated design gives 21% more filtration area.

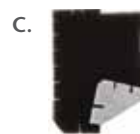
No.	Product Name	Filter Media	List Price*
100431	Intercept Micro Filters, One Pack of 10 fits Super QuarterVac, Super QuarterVac HEPA, QuarterVac, TailVac, ProVac BP, QuietPro BP HEPA, GoVac BP, GoCartVac, AviationVac (Case = 20 packs)	496 sq. in. / 6 qt.	\$15.29
100331	Intercept Micro Filters, One Pack of 10 fits Super CoachVac, Super CoachVac HEPA, CoachVac, MegaVac (Case = 20 packs)	698 sq. in. / 10 qt.	20.39
100291	Intercept Micro Filters, One Pack of 10 fits LineVacer (Case = 20 packs)	698 sq. in. / 10 qt.	30.49
104544	Intercept Micro Filters, One Pack of 10 fits QuietPro CN HEPA, RunningVac, ProVac CN (Case = 20 packs)	698 sq. in. / 10 qt.	24.48
103483	Intercept Micro Filters, One Pack of 10 fits ProForce (Case = 25 packs)	248 sq. in. / 3.25 qt.	10.99

\* Price is for one pack of 10 filters



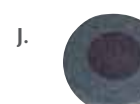
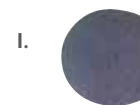
## Upright Replacement Filters

No.	Product Name	List Price
A. 105136	Replacement HEPA Media Exhaust Filter	\$6.62
B. 104246	Replacement Exhaust Filter Cover	4.97
C. 104281	Replacement Motor Intake Filter	2.89



## Miscellaneous Filters

No.	Product Name	List Price
D. 100564	Micro Cloth Filter for TailVac, Super QuarterVac, Super QuarterVac HEPA, QuarterVac, ProVac BP, QuietPro BP HEPA, GoVac BP, GoCartVac, AviationVac	\$23.29
100565	Micro Cloth Filter for CoachVac, Super CoachVac, Super CoachVac HEPA, MegaVac, LineVacer	28.19
103115	Micro Cloth Filter for QuietPro CN HEPA, RunningVac, ProVac CN	29.41
E. 104274	True HEPA Filter Assembly Complete w/Bottom Cap for LineVacer (Black)	231.09
F. 104275	True ULPA Filter Assembly Complete w/Bottom Cap for LineVacer (Black)	299.50
G. 101220	High Filtration Discs for Dome Filter, One Pack of Two; Super QuarterVac, QuarterVac, CoachVac, Super CoachVac, MegaVac, ProVac BP, GoVac BP, GoCartVac, AviationVac	10.09
102761	High Filtration Discs for Dome Filter, One Pack of Two; TailVac, RunningVac, ProVac CN	10.29
H. 106526	HEPA Dome Filter (Fits all Backpacks except TailVac)	10.29
106887	HEPA Dome Filter Upgrade Kit (Super CoachVac) - includes filter and HEPA decal	19.49
106888	HEPA Dome Filter Upgrade Kit (Super QuarterVac) - includes filter and HEPA decal	19.49
I. 100343	Foam Filter Media for Dome Filter; Super QuarterVac, QuarterVac, GoVac BP, CoachVac, Super CoachVac, MegaVac, LineVacer, ProVac BP, AviationVac	1.26
101949	Foam Filter Media for Dome Filter; TailVac, QuietPro CN HEPA, RunningVac, ProVac CN	1.26
J. 100698	Sound Muffler for QuarterVac	22.99
105800	Sound Muffler for Super QuarterVac, Super QuarterVac HEPA, AviationVac, ProVac BP, GoVac BP	22.99
100597	Sound Muffler for Super CoachVac, Super CoachVac HEPA, CoachVac, MegaVac	22.99
K. 103123	Exhaust/Sound Filter for RunningVac, ProVac CN	18.15
106928	Exhaust Muffler for GoCartVac (not shown)	5.79
L. 103638	True HEPA Filter Assembly w/Electrical Connector for QuietPro CN HEPA	117.78

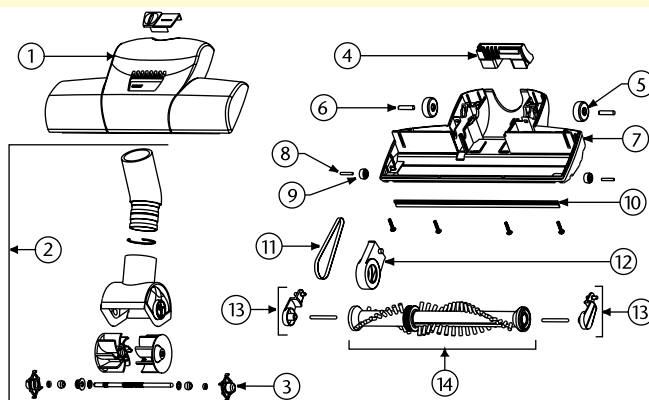




# REPLACEMENT PARTS/EDUCATIONAL MATERIALS

## Turbo Brush Replacement Parts

No.	Product Name	List Price
1	104010 Top Cover	\$22.50
2	104011 1 1/4" Neck Assembly Complete	20.97
	104012 1 1/2" Neck Assembly Complete	20.97
3	103974 Bushing w/Holder	4.37
4	104014 Medium Orifice	10.09
5	104017 Back Wheel, Set of 2	2.04
6	104016 Rear Axle, Set of 2	1.99
7	104021 Bottom Cover	17.70
8	104018 Front Axle, Set of 2	1.70
9	104019 Front Wheel, Set of 2	1.70
10	104022 Squeegee	2.24
11	104020 Belt	5.63
12	104023 Belt Guard	.85
13	103975 Brush Arm, Set of 2	3.49
14	104024 Brush Roller Assembly	19.66



## Attachment Replacement Parts

No.	Product Name	List Price
100084	Replacement Brush – 11" Floor Tool (100083)	\$8.44
100093	Replacement Brush – 16" Floor Tool (100092)	9.57
100713	Replacement Nylon Brush – 14" Floor Tool (100623)	15.45
100714	Replacement Horse Hair Brush – 14" Floor Tool (100614)	19.90
100141	Replacement Bumper – 14" Floor Tool (100147)	4.08
100145	Replacement Felt – 14" Floor Tool (100143)	6.75
100146	Replacement Felt, Scalloped – 14" Floor Tool (100144 & 106194)	6.75
100085	Adjustment Lever – 11" Floor Tool (100083)	12.61
100094	Adjustment Lever – 16" Floor Tool (100092)	12.61
100097	Screw – 11"/16" Floor Tools (100083/100092)	1.14
100098	Spring – 11"/16" Floor Tools (100083/100092)	1.73
100096	Brush Height Adjustment Knob – 11"/16" Floor Tools (100083/100092)	4.02
100116	Replacement Nylon Brush – 5" Upholstery Tool (100115)	6.75
100112	Reducer Cuff 1 1/4" to 1 1/2"	3.96
103088	Removable Brush – 5 1/2" Upholstery Tool (103087)	3.37
100099	Replacement Nut – Aluminum Wands (100102, 100104, 101338, 106290)	7.32
100101	Replacement Sleeve – Aluminum Wands (100102, 100104, 101338, 106290)	4.21
100100	Replacement Ring – Aluminum Wands (100102, 100104, 101338, 106290, 106293)	1.70
101445	Retro Kit – 14" E-Z Glide Floor Tool (fits 101446 Floor Tool & 100147)	24.75
101155	Replacement Nylon Brush – E-Z Glide 14" Floor Tool (101446)	3.99
101880	Replacement Nylon Brush – JetSweep 20, 20" Hard Floor Tool, Set of Two (101613)	13.50
101473	Repair Clip with Screws – 14" Hard Floor Tool w/Nylon Brush (100623)	2.18
101475	Repair Kit – Felt Floor Tools: Support Bars and Screws	11.40
101092	Reducer Cuff 1 1/2" x 1 1/4" For Hose	11.50
103099	Cuff Adapter 1 1/4" x 1 1/4"	2.50
101615	Replacement Blue Bumper for Jet Sweep 20 (101613)	7.21
105694	Replacement Nylon Brush – 18" Sidewinder Hard Floor Tool (105792)	16.95
106064	Replacement Brush – 12" Floor Tool (103084)	12.73

## Educational Materials

### Videos

No.	Product Name	List Price
105498	Training/Sales DVD – The ProTeam Way	\$19.95
104812	Pest Control DVD – Introduction to Pest Control Systems	19.95
106501	Vacuums – Set-Up/Training/Operation DVD (English and Spanish)	19.95

### ManageMen® Team Cleaning® Programs\*

On-site training program with video\*\* and printed support materials.

No.	Product Name	List Price
100630	<b>How to Coach a Successful Team</b> – Audio CD, menu driven DVD that also contains Spanish, Playbook, ISSA's 447 Cleaning Times, Wooden's Pyramid of Success and a Janitor University Philosophy of Cleaning Poster.	\$99.95
101122	<b>How to Be a Light-Duty Specialist™</b> – Audio CD, menu driven DVD that also contains Spanish, Light-Duty Playbook and 1 Scouting Report.	99.95
100628	<b>How to Be a Vacuum Specialist™</b> – Audio CD, menu driven DVD that also contains Spanish, Vacuum Playbook, 1 Scouting Report and 1 Simplified Simon Vacuum Brochure.	99.95
100629	<b>How to Be a Restroom Specialist™</b> – Audio CD, menu driven DVD that also contains Spanish, Restroom Playbook and 1 Scouting Report.	99.95
104152	<b>How to Be a Utility Specialist™ in Carpet Care</b> – Audio CD, menu driven DVD that also contains Spanish, Playbook and 3 Scouting Reports.	99.95

\*ManageMen is a registered trademark of ManageMen, Inc.

\*\*Discounts do not apply to Educational Videos

# ACCESSORIES/POINT-OF-PURCHASE ITEMS

## ProDuster® and Sleeves

Disposable anti-static ProDuster sleeves attract and hold dust instead of spreading it around. Using ProDuster sleeves over your wool or feather-type dusters prolongs the life of your dusters while providing more effective dusting.

Ask for a **FREE** sample pack with your next order!

No.	Product Name	List Price
101788	<b>P.O.P. Package</b> One wool duster (extendable to 4 ft.) and one pack of 10 sleeves in hanging point-of-purchase (P.O.P.) package.	\$38.99
101808	<b>P.O.P. Case</b> 12 individual point-of-purchase (P.O.P.) packages. Each package contains one wool duster with one pack of 10 sleeves.	359.00
101533	<b>500 sleeves</b> 10 packs of 50	249.75
101532	<b>50 sleeves</b> 1 pack of 50	27.99



## The ProTeam Vac Station

The Vac Station helps operators of any height easily slip on and off any ProTeam backpack vacuum. The ProTeam Vac Station measures 22" long, 8.5" high, and 14" deep.

No.	Product Name	List Price
102947	<b>Vac Station</b>	\$55.80

Extra Intercept Micro Filters and wands with floor tools fit into spaces on the side. Dust brushes and upholstery tools hide in a compartment beneath the platform on which any ProTeam backpack or hip-style vacuum fits. A sturdy steel wall bracket is mounted to the wall with three screws. The Vac Station attaches to the bracket and allows for 20" of travel. Crevice tools and floor tools slide into holes behind the vacuum. Extension cords hang from the side.



## Miscellaneous

No.	Product Name	List Price
100361	<b>(G.) Waist Belt Extension (18")</b>	\$18.57
106346	<b>Waist Belt Extension (18") Nifco (Not Shown)</b>	18.57
100360	<b>(H.) Waist Belt Extension (10")</b>	17.78
106345	<b>Waist Belt Extension (10") Nifco (Not Shown)</b>	17.78
102604	<b>(I.) Schulte Cord Holder</b>	8.35
100376	<b>(J.) Water Lift Gauge</b>	76.55
101394	<b>(K.) Ergonomic Wand Handles, Set</b>	24.30
101680	<b>(L.) 50' 16-Gauge Extension Cord (Blue)*</b>	63.50
101678	<b>(M.) 50' 16-Gauge Extension Cord (Yellow)*</b>	31.05
103441	<b>(N.) Cord Lock (ProVac CN, RunningVac)</b>	11.37
106261	<b>6' Static Strap Kit (ProForce) (Not Shown)</b>	77.42
106274	<b>10' Static Strap Kit (ProForce) (Not Shown)</b>	90.14

\*All include a Cord Wrap



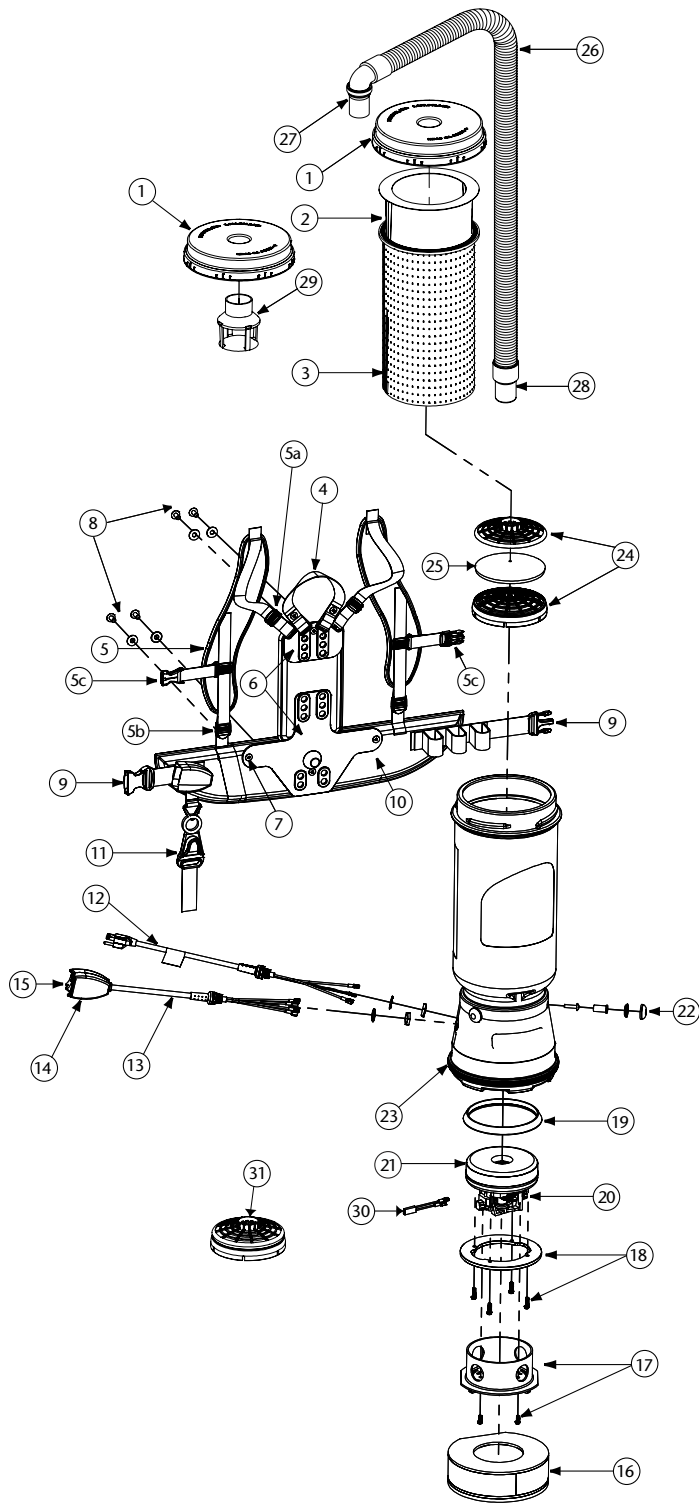
## Point-of-Purchase Items\*\*

No.	Product Name	List Price
A. 104029	<b>Vac Display Mannequin</b> Custom powder-coated metal backpack display. Holds one vacuum.	\$236.00
B. 105031	<b>ALA Price Tags (Set of 25)</b>	13.76
C. 104158	<b>12" Display Pedestal</b>	31.50
C. 104159	<b>18" Display Pedestal</b>	31.50
C. 105537	<b>Set of Display Pedestals</b> Set of (1) 12" Display Pedestal and (1) 18" Display Pedestal	57.75
D. 100180	<b>Demo Duffel Bag</b> Durable product demo duffel bag holds vacuum and complete demo kit.	42.00
E. 100719	<b>Logo Banner</b> Attractive 2' x 3' vinyl ProTeam logo banner w/metal grommets for easy display.	30.00
F. 104160	<b>Floor Mat</b> Eye catching ProTeam logo mat designed to withstand years of abuse. <i>Displays do not include vacuums.</i>	152.25



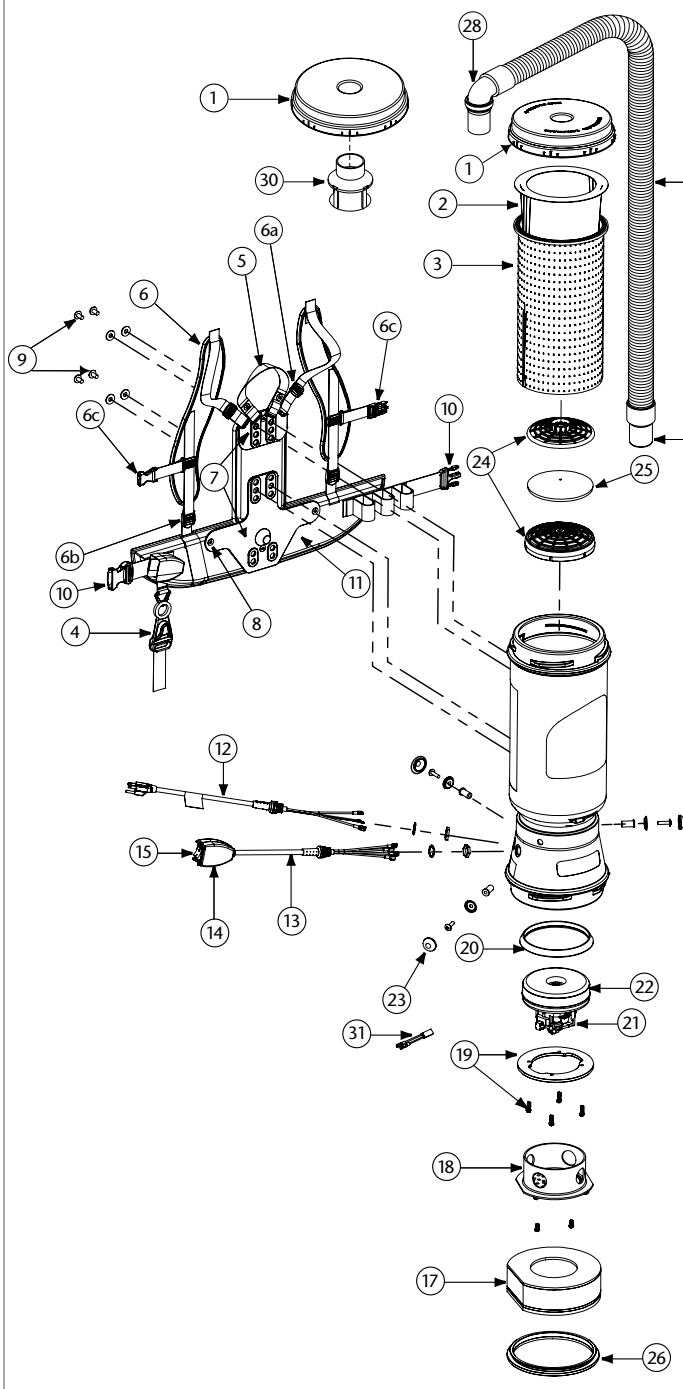
\*\*Discounts do not apply to Point of Purchase items

# SUPER COACHVAC/SUPER COACHVAC HEPA/COACHVAC PARTS



No.	Product Name	Qty	List Price
1	100197 Twist Cap (Purple)	1 ea.	\$32.48
2	100331 698 Sq. In. Intercept Micro Filter	10/pk	20.39
3	100565 Micro Cloth Filter	1 ea.	28.19
4	101737 Carry Handle w/Rivet and Washer Set	1 set	8.13
5	100356 Shoulder Strap Assembly (includes: #5a, 5b, 5c)	1 set	16.24
5a	100358 Shoulder Strap Plastic Adjustment Buckle (Top)	1 ea.	.94
5b	100357 Shoulder Strap Plastic Adjustment Buckle (Bottom)	1 ea.	.94
5c	103627 Sternum Strap Buckles (Latch and Keeper)	1 set	2.00
6	105046 Backplate (includes: #7)	1 ea.	24.99
7	100375 Barrel Nut Connection Set for Backplate (Replacement)	1 set	5.62
8	100716 Backplate (Black) Connection Set: 4 Screws w/Washers	1 set	12.49
9	106719 Waist Belt Keeper and Latch	1 ea.	11.32
10	100359 Waist Belt (includes: #9)	1 ea.	37.47
	100354 Strap Assembly Complete (includes: #5, 10)	1 set	49.97
	103166 Backplate (Black) System Complete (includes: #4, 5, 6, 8, 10)	1 set	62.46
11	102604 Schulte Cord Holder	1 ea.	8.35
12	100641 Power Cord (18" 14/3) Assembly	1 set	18.12
13	101610 Switch Cord Assembly (includes: #14, 15)	1 set	34.98
	101714 Switch Cord w/Crimps	1 ea.	15.50
14	101472 Switch Box w/Velcro and New Lamb Switch	1 set	22.48
15	106066 On/Off Switch (must use with #106287)	1 ea.	6.80
	106287 Switch Box w/Velcro and Screws	1 ea.	16.77
16	100597 Sound Muffler	1 ea.	22.99
17	105044 Motor Shroud Cover w/Screw Set: 2 Screws	1 set	21.41
18	100335 Motor Compression Ring w/Screws	1 set	10.62
	100378 Compression Ring Screw Set: 4 Screws	1 set	2.81
19	100014 Tetraseal	1 ea.	11.25
20	105697 Carbon Brush Set for CoachVac Motor (Domel Motor)	1 set	19.98
	100424 Carbon Brush Set for CoachVac Motor (Ametek Motor) (116311-00)	1 set	16.24
	106904 Carbon Brush Set for CoachVac Motor (Ametek Motor) (122157-00)	1 set	19.98
	105164 Carbon Brush Set for Super CoachVac Motor (Domel Motor)	1 set	19.98
	101720 Carbon Brush Set for Super CoachVac Motor (Ametek Motor)	1 set	19.98
21	100422 Motor/Fan (120 V) w/Crimps for CoachVac	1 ea.	76.15
	105162 Motor/Fan (120 V) w/Crimps for Super CoachVac	1 ea.	112.42
	100379 Motor Ground and Wire Clamp Set w/Screws	1 set	5.62
	100380 Motor Crimp Set: 4 Female, 4 Male, Ground Crimp Connector	1 set	9.99
22	100368 Motor Mounting System Set: 3 Well Nuts, 3 Bolts, 3 Washers, 3 Covers	1 set	12.49
23	100586 Bottom Bumper	1 ea.	6.88
24	100030 Dome Filter w/Foam Media	1 ea.	7.50
25	100343 Foam Filter Media for Dome Filter	1 ea.	1.26
	101220 High Filtration Disk (optional)	2/pk	10.09
26	103048 Static-Dissipating Hose w/Cuffs (Black)	1 ea.	23.74
27	101928 Replacement Double Swivel Elbow Cuff (Black)	1 ea.	8.63
28	100694 Replacement Swivel Cuff (Black) 1 1/2"	1 ea.	5.13
29	101543 Filter Guard (Optional)	1 ea.	9.02
30	103476 Thermal Protector	1 ea.	13.70
31	106526 Replacement HEPA Dome Filter	1 ea.	10.29
	101678 50' Extension Cord (Not Shown)	1 ea.	31.05

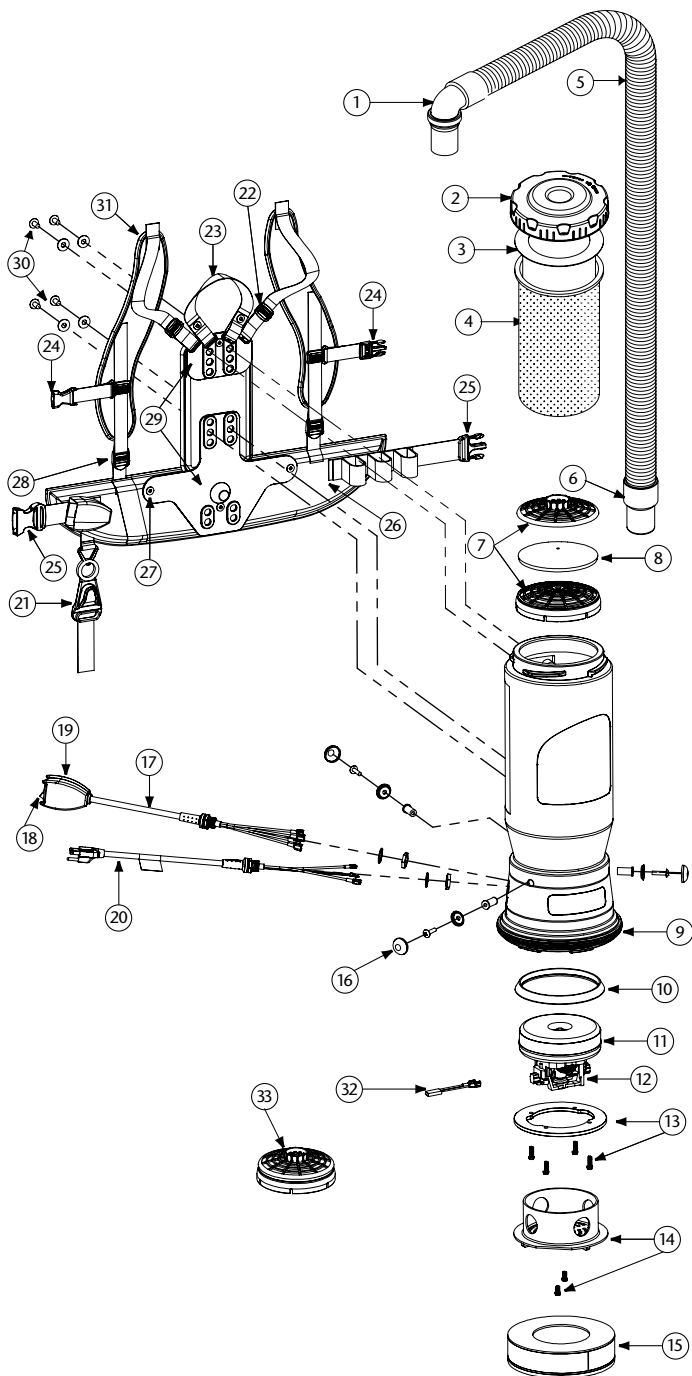
# MEGAVAC PARTS



No.	Product Name	Qty	List Price
1	100320 Twist Cap (Black)	1 ea.	\$32.48
2	100331 698 Sq. In. Intercept Micro Filter	10/pk	20.39
3	100565 Micro Cloth Filter	1 ea.	28.19
4	102604 Schulte Cord Holder	1 ea.	8.35
5	101737 Carry Handle w/Rivet and Washer Set	1 set	8.13
6	100356 Shoulder Strap Assembly (includes: #6a, 6b, 6c)	1 set	16.24
6a	100358 Shoulder Strap Plastic Adjustment Buckle (Top)	1 ea.	.94
6b	100357 Shoulder Strap Plastic Adjustment Buckle (Bottom)	1 ea.	.94
6c	103627 Sternum Strap Buckles (Latch and Keeper)	1 set	2.00
7	105046 Backplate (includes: #8)	1 ea.	24.99
8	100375 Barrel Nut Connection Set for Backplate (Replacement)	1 set	5.62
9	100374 Backplate Connection Set: 4 Screws w/Washers, Stand Offs	1 set	12.49
10	106719 Waist Belt Keeper and Latch	1 ea.	11.32
11	100359 Waist Belt (includes: #10)	1 ea.	37.47
	100354 Strap Assembly Complete (includes: #6, 11)	1 set	49.97
	103166 Backplate System Complete (includes: #5, 6, 7, 9, 11)	1 set	62.46
12	100641 Power Cord (18" 14/3) Assembly	1 set	18.12
13	101610 Switch Cord Assembly (includes: #14,15)	1 set	34.98
	101714 Switch Cord w/Crimps	1 ea.	15.50
14	101472 Switch Box w/Velcro and New Lamb Switch	1 set	22.48
15	106066 On/Off Switch (must use with #106287)	1 ea.	6.80
	106287 Switch Box w/Velcro and Screws	1 ea.	16.77
16	105070 Bottom Twist Cap (Black)	1 ea.	37.47
17	100597 Sound Muffler	1 ea.	22.99
18	105044 Motor Shroud Cover w/Screws	1 set	21.41
19	100335 Motor Compression Ring w/Screws	1 set	10.62
	100378 Compression Ring Screw Set: 4 Screws	1 set	2.81
20	100014 Tetraseal	1 ea.	11.25
21	105164 Carbon Brush Set for MegaVac Motor (Domel Motor)	1 set	19.98
	101720 Carbon Brush Set for MegaVac Motor (Ametek Motor)	1 set	19.98
22	105162 Motor/Fan (120V) w/Crimps for MegaVac	1 set	112.42
	100379 Motor Ground and Wire Clamp Set w/Screws	1 set	5.62
	100380 Motor Crimp Set: 4 Female, 4 Male, Ground Crimp Connector	1 set	9.99
23	100368 Motor Mounting System Set: 3 Well Nuts, 3 Bolts, 3 Washers, 3 Covers	1 set	12.49
24	100030 Dome Filter w/Foam Media	1 ea.	7.50
25	100343 Foam Filter Media for Dome Filter	1 ea.	1.26
	101220 High Filtration Disk (optional)	2/pk	10.09
26	104998 Bottom Twist Cap Gasket	1 ea.	8.74
27	103048 Static-Dissipating Hose w/Cuffs (Black)	1 ea.	23.74
28	101928 Replacement Double Swivel Elbow Cuff (Black)	1 ea.	8.63
29	100694 Replacement Swivel Cuff (Black) 1 1/2"	1 ea.	5.13
30	101543 Filter Guard (Optional)	1 ea.	9.02
31	103476 Thermal Protector	1 ea.	13.70
	101678 50' Extension Cord (Not Shown)	1 ea.	31.05

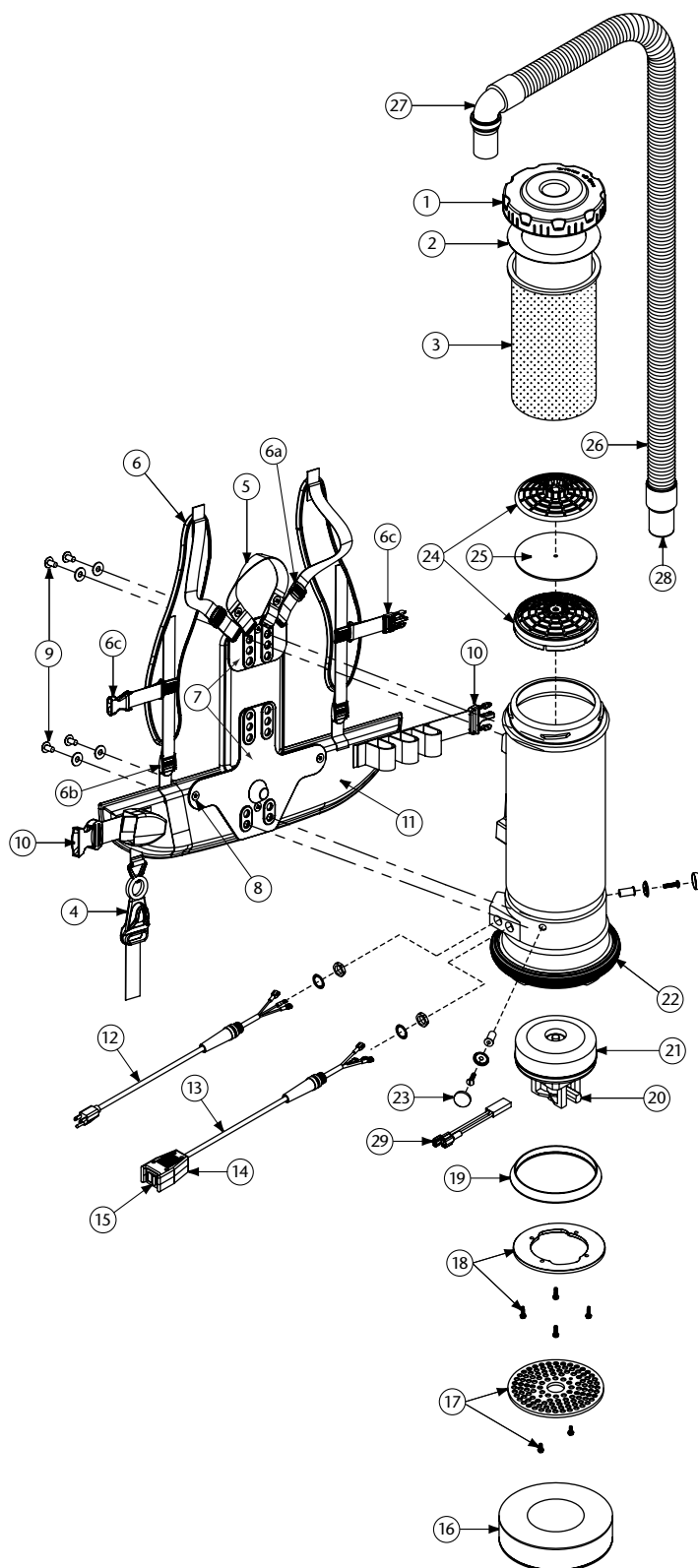


# SUPER QUARTERVAC/SUPER QUARTERVAC HEPA PARTS



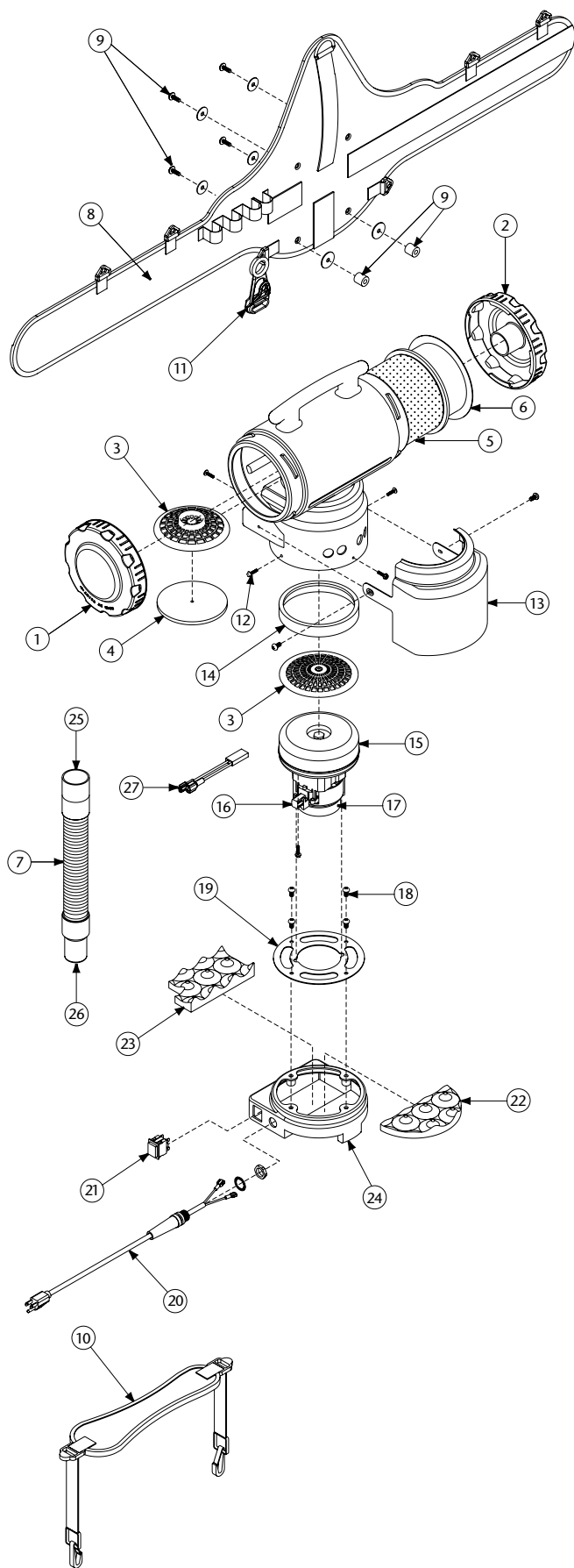
No.	Product Name	Qty	List Price
1	101928 Replacement Double Swivel Elbow Cuff (Black) 1 1/2"	1 ea.	\$8.63
2	106073 Twist Cap (Purple)	1 ea.	27.48
3	100431 496 Sq. In. Intercept Micro Filter	10/pk	15.29
4	100564 Micro Cloth Filter	1 ea.	23.29
5	103048 Static-Dissipating Hose (Black) w/Cuffs 1 1/2"	1 ea.	23.74
6	100694 Replacement Swivel Cuff (Black) 1 1/2"	1 ea.	5.13
7	100030 Dome Filter w/Foam Media	1 ea.	7.50
8	100343 Foam Filter Media for Dome Filter	1 ea.	1.26
	101220 High Filtration Disk (optional)	2/pk	10.09
9	100586 Bottom Bumper	1 set	6.88
10	100014 Tetraseal	1 ea.	11.25
11	105162 Motor/Fan (120 V) w/Crimps	1 ea.	112.42
	100379 Motor Ground Wire Clamp Set w/Screws	1 set	5.62
	100380 Motor Crimp Set: 4 Female, 4 Male, Ground Crimp Connector	1 set	9.99
12	105164 Carbon Brush Set (Domel)	1 set	19.98
	101720 Carbon Brush Set (Ametek)	1 set	19.98
13	100335 Motor Compression Ring w/Screws	1 set	10.62
	100378 Compression Ring Screws: 4 Screws	1 set	2.81
14	105044 Motor Shroud Cover w/Screws: 2 Screws	1 set	21.41
15	105800 Sound Muffler	1 ea.	22.99
16	100368 Motor Mounting System Set: 3 Well Nuts, 3 Bolts, 3 Washers, 3 Covers	1 set	12.49
17	101714 Switch Cord w/Crimps	1 set	15.50
	101610 Switch Cord Assembly (includes: #17, 18, 19)	1 ea.	34.98
18	106066 On/Off Switch (must use with #106287)	1 ea.	6.80
	106287 Switch Box w/Velcro and Screws	1 ea.	16.77
19	101472 Switch Box w/Velcro and New Lamb Switch	1 set	22.48
20	100641 Power Cord (18" 14/3) Assembly	1 set	18.12
21	102604 Schulte Cord Holder	1 ea.	8.35
22	100358 Shoulder Strap Plastic Adjustment Buckle (Top)	1 ea.	.94
23	101737 Carry Handle w/Rivet and Washer Set	1 set	8.13
24	103627 Sternum Strap Buckles (Latch and Keeper)	1 set	2.00
25	106719 Waist Belt Keeper and Latch	1 ea.	11.32
26	100359 Waist Belt (includes: #25)	1 ea.	37.47
27	100375 Barrel Nut Connection Set for Backplate (Replacement)	1 set	5.62
28	100357 Shoulder Strap Plastic Adjustment Buckle (Bottom)	1 ea.	.94
29	105046 Backplate (includes: #27)	1 ea.	24.99
	103166 Backplate System Complete (includes: #23, 26, 29, 30, 31)	1 set	62.46
30	100716 Backplate (Black) Connection Set: 4 Screws w/Washers	1 set	12.49
31	100356 Shoulder Strap Assembly (includes: #22, 24, 28)	1 set	16.24
	100354 Strap Assembly Complete (includes: #26, 31)	1 set	49.97
32	103476 Thermal Protector	1 ea.	13.70
33	106526 Replacement HEPA Dome Filter	1 ea.	10.29
	101678 50' Extension Cord (Not Shown)	1 ea.	31.05

# QUARTERVAC PARTS



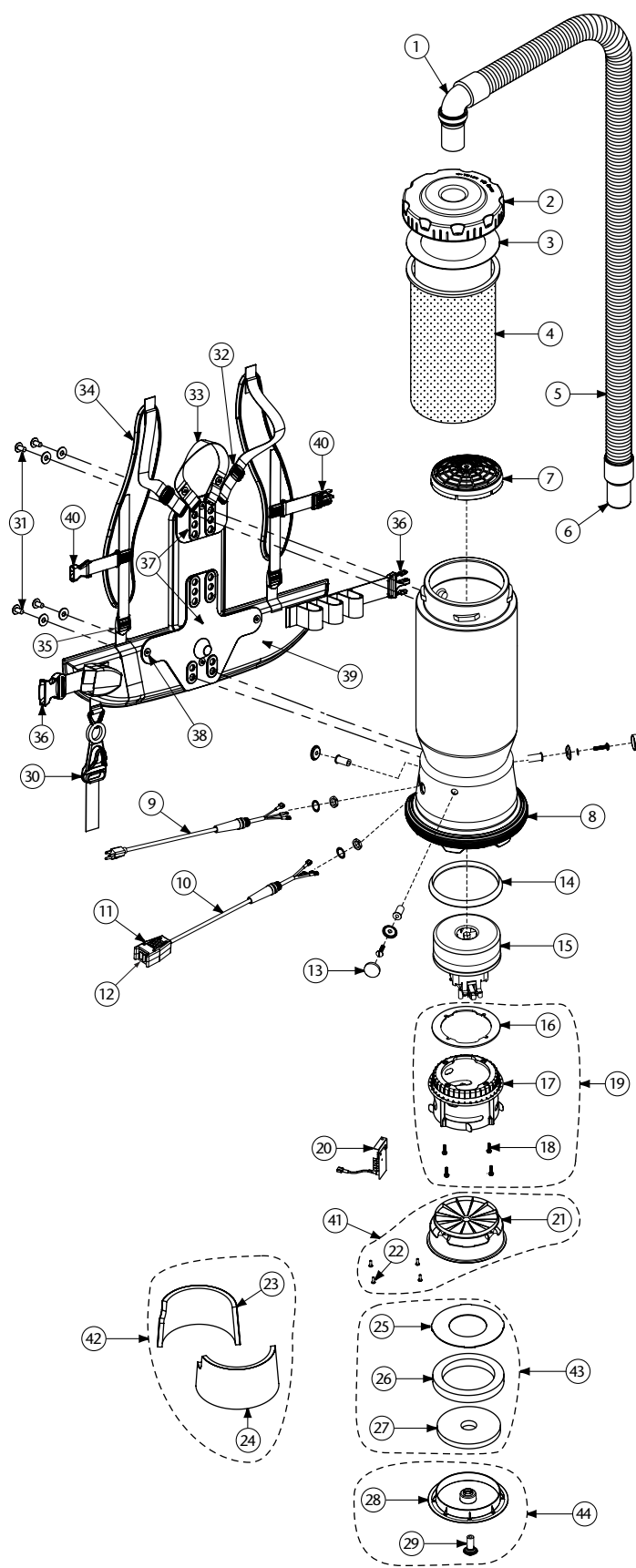
No.	Product Name	Qty	List Price
1	104273 Twist Cap (Black)	1 ea.	\$27.48
2	100431 496 Sq. In. Intercept Micro Filter	10/pk	15.29
3	100564 Micro Cloth Filter	1 ea.	23.29
4	102604 Schulte Cord Holder	1 ea.	8.35
5	101737 Carry Handle w/Rivet and Washer Set	1 set	8.13
6	100356 Shoulder Strap Assembly (includes: #6a, 6b, 6c)	1 set	16.24
6a	100358 Shoulder Strap Plastic Adjustment Buckle (Top)	1 ea.	.94
6b	100357 Shoulder Strap Plastic Adjustment Buckle (Bottom)	1 ea.	.94
6c	103627 Sternum Strap Buckles (Latch and Keeper)	1 set	2.00
7	105046 Backplate (includes: #8)	1 ea.	24.99
8	100375 Barrel Nut Connection Set for Backplate (Replacement)	1 set	5.62
9	100716 Backplate (Black) Connection Set: 4 Screws w/Washers	1 set	12.49
10	106719 Waist Belt Keeper and Latch	1 ea.	11.32
11	100359 Waist Belt (includes: #10)	1 ea.	37.47
	100354 Strap Assembly Complete (includes: #6, 11)	1 set	49.97
	103166 Backplate (Black) System Complete (includes: #5, 6, 7, 9, 11)	1 set	62.46
12	100641 Power Cord (18" 14/3) Assembly	1 set	18.12
13	101714 Switch Cord w/Crimps	1 set	15.50
	101610 Switch Cord Assembly (includes: #13, 14, 15)	1 ea.	34.98
14	101472 Switch Box w/Velcro and New Lamb Switch	1 set	22.48
15	106066 On/Off Switch (must use with 106287)	1 ea.	6.80
	106287 Switch Box w/Velcro and Screws	1 ea.	16.77
16	100698 Sound Muffler	1 ea.	22.99
17	100352 Plastic Air Diffuser w/Screw Set: 2 Screws	1 set	10.62
18	100335 Motor Compression Ring w/Screws	1 set	10.62
	100378 Compression Ring Screws: 4 Screws	1 set	2.81
19	100014 Tetraseal	1 ea.	11.25
20	105697 Carbon Brush Set (Domel Motor)	1 set	19.98
	101531 Carbon Brush Set (Ametek Motor) (116309-00)	1 set	19.98
	106904 Carbon Brush Set (Ametek Motor) (122157-00)	1 set	19.98
21	100422 Motor/Fan (120 V) w/Crimps (116309-00)	1 ea.	76.15
	100379 Motor Ground Wire Clamp Set w/Screws	1 set	5.62
	100380 Motor Crimp Set: 4 Female, 4 Male, Ground Crimp Connector	1 set	9.99
22	100586 Bottom Bumper	1 set	6.88
23	100368 Motor Mounting System Set: 3 Well Nuts, 3 Bolts, 3 Washers, 3 Covers	1 set	12.49
24	100030 Dome Filter w/Foam Media	1 ea.	7.50
25	100343 Foam Filter Media for Dome Filter	1 ea.	1.26
	101220 High Filtration Disk (optional)	2/pk	10.09
26	103048 Static-Dissipating Hose (Black) w/Cuffs 1 1/2"	1 ea.	23.74
27	101928 Replacement Double Swivel Elbow Cuff (Black) 1 1/2"	1 ea.	8.63
28	100694 Replacement Swivel Cuff (Black) 1 1/2"	1 ea.	5.13
29	103476 Thermal Protector	1 ea.	13.70
	101678 50' Extension Cord (Not Shown)	1 ea.	31.05

## TAILVAC PARTS



No.	Product Name	Qty	List Price
1	<b>101288</b> Blind Twist Cap Assembly (Grey)	1 ea.	<b>\$27.48</b>
2	<b>101934</b> Twist Cap for Hose Cuff (Grey)	1 ea.	<b>27.48</b>
3	<b>102784</b> Dome Filter w/Foam Media	1 ea.	<b>7.50</b>
4	<b>101949</b> Foam Filter Media for Dome Filter	1 ea.	<b>1.26</b>
	<b>102761</b> High Filtration Disc (optional)	2/pk	<b>10.29</b>
5	<b>100564</b> Micro Cloth Filter	1 ea.	<b>23.29</b>
6	<b>100431</b> 496 sq. in. Reusable Intercept Micro Filter	10/pk	<b>15.29</b>
7	<b>101184</b> 3' to 1' Stretch Hose w/Cuffs 1 1/4" (Black)	1 ea.	<b>21.87</b>
	<b>101705</b> 3' to 1' Stretch Hose w/Cuffs 1 1/2" (Black)	1 ea.	<b>27.15</b>
8	<b>102878</b> Waist Belt w/Velcro®	1 ea.	<b>40.90</b>
	<b>103025</b> Retrofit set: Waist Belt and Monostrap	1 set	<b>58.90</b>
9	<b>101274</b> Waist Belt Connection Set: 4 Screws, 6 Washers, 2 Stand-offs	1 set	<b>5.05</b>
10	<b>102879</b> Monostrap Assembly	1 ea.	<b>18.75</b>
11	<b>102604</b> Shulte Cord Holder	1 ea.	<b>8.35</b>
12	<b>101272</b> Step Cap Screw Kit: 4 Screws	1 set	<b>3.12</b>
13	<b>101711</b> Shroud Retro Kit (Grey) w/2 Screws	1 ea.	<b>24.99</b>
14	<b>103236</b> Motor Seal	1 ea.	<b>6.25</b>
15	<b>101189</b> Motor/Fan (120 V) w/Crimps (Ametek)	1 ea.	<b>106.00</b>
16	<b>102988</b> Carbon Brush Set for Motor (Ametek)	1 set	<b>19.98</b>
17	<b>103043</b> Fan and Brush Cover Kit	1 ea.	<b>18.12</b>
18	<b>101271</b> Motor Mount Screw Kit: 5 Screws, 4 Washers, 1 Nut	1 ea.	<b>1.88</b>
19	<b>100950</b> Director Plate	1 ea.	<b>11.74</b>
20	<b>101713</b> Power Cord (18" 14/3) Assembly Complete w/Strain Relief with Locknut and Washer	1 set	<b>18.12</b>
21	<b>100743</b> Double Pole On/Off Switch	1 ea.	<b>6.80</b>
22	<b>101228</b> Front Sound Foam Baffle	1 ea.	<b>4.38</b>
23	<b>101229</b> Rear Sound Foam Baffle	1 ea.	<b>3.75</b>
24	<b>103262</b> Step Cap (Grey) w/Attached Front Sound Foam	1 set	<b>31.23</b>
25	<b>101437</b> Replacement Fixed Hose Cuff (Black) 1 1/2"-1 1/4"	1 ea.	<b>5.33</b>
	<b>101536</b> Replacement Fixed Hose Cuff (Black) 1 1/2"	1 ea.	<b>4.01</b>
26	<b>101436</b> Replacement Swivel Cuff (Black) 1 1/4"	1 ea.	<b>6.99</b>
	<b>100694</b> Replacement Swivel Cuff (Black) 1 1/2"	1 ea.	<b>5.13</b>
27	<b>105648</b> Thermal Protector	1 ea.	<b>13.70</b>
	<b>101678</b> 50' Extension Cord (Not Shown)	1 ea.	<b>31.05</b>

# QUIETPRO BP HEPA PARTS



No.	Product Name	Qty	List Price
1	101928 Elbow Cuff, Swivel	1 ea.	\$8.63
2	104273 Twist Cap (Black)	1 ea.	27.48
3	100431 496 Sq. In. Intercept Micro Filter	10/pk	15.29
4	100564 Micro Cloth Filter	1 ea.	23.29
5	103048 Static-Dissipating Hose (Black) w/Cuffs 1 1/2"	1 ea.	23.74
6	100694 Replacement Swivel Cuff (Black) 1 1/2"	1 ea.	5.13
7	106526 Replacement HEPA Dome Filter	1 ea.	10.29
8	100586 Bottom Bumper	1 ea.	6.88
9	100641 Power Cord Assembly Complete w/Strain Relief	1 set	18.12
10	105748 Switch Cord Assembly Complete F/QuietPro	1 set	35.15
11	106287 Switch Box w/Velcro and Screws	1 set	22.48
12	105973 On/Off Switch	1 ea.	18.52
	105438 On/Off Switch (older style)	1 ea.	18.52
13	100368 Motor Mounting System Set: 3 Well Nuts, 3 Bolts, 3 Washers, 3 Covers	1 set	12.49
14	105643 Tetraseal, Motor	1 ea.	10.82
15	105722 Motor, (120V), 2-Stage (includes: #16)	1 ea.	94.69
	105697 Carbon Brush Set (Domel)	1 set	19.98
	100424 Carbon Brush Set (Ametek)	1 set	19.98
16	105605 Gasket, Motor	1 ea.	5.95
17	105149 Cap, Motor	1 ea.	16.77
18	105763 Screw, 10-32 x 3/4", Self Tapping	4/pk.	2.71
19	105619 Motor Mount Assembly (includes: #16, 17, 18)	1 set	30.83
20	105653 Dual Speed Module and Schematic with Thermal Protector	1 ea.	57.32
21	105150 Exhaust Housing, Motor	1 ea.	12.98
22	105767 Screw, #8 x 1/2", Phillips, Hi/Lo	4/pk.	2.71
23	105422 Acoustical Insert, Left	1 ea.	23.79
24	105419 Acoustical Insert, Right	1 ea.	23.79
25	105337 Ring, Motor Housing, Large	1 ea.	13.25
26	105342 Foam, Ring, Motor Housing	1 ea.	16.22
27	105343 Foam, Cover, Motor Housing	1 ea.	11.36
28	105341 Cover, Motor Housing	1 ea.	11.08
29	105613 Motor Mount	1 ea.	6.49
30	102604 Shulte Cord Holder	1 ea.	8.35
31	100716 Backplate (Blk) Connection Set: 4 Screws w/Washers	1 set	12.49
32	100358 Shoulder Strap Plastic Adjustment (Top)	1 ea.	.94
33	101737 Carry Handle w/Rivet and Washer Set	1 set	8.13
34	100356 Shoulder Strap Assembly: (includes: #32, 35, 40)	1 set	16.24
35	100357 Shoulder Strap Plastic Adjustment (Bottom)	1 ea.	.94
36	106719 Waist Belt Keeper and Latch	1 ea.	11.32
37	105046 Backplate (includes: #38)	1 set	24.99
	103166 Backplate System Complete (includes: #31, 33, 34, 37, 38, 39)	1 set	62.46
	100354 Strap Assembly Complete (includes: #34, 39)	1 set	49.97
38	100375 Barrel Nut Connection Set for Backplate (Replacement)	1 set	5.62
39	100359 Waist Belt (includes: #36)	1 ea.	37.47
40	103627 Sternum Strap Buckles (Latch and Keeper)	1 set	2.00
41	105620 Kit, Housing, Exhaust, Motor F/QuietPro (includes: #21, 22)	1 set	30.83
42	105621 Kit, Foam, Laminate Acoustical Panels (includes: #23, 24)	1 set	39.48
43	105622 Kit, Exhaust, Foam and Ring (includes: #25, 26, 27)	1 set	34.61
44	105623 Kit, Cover, Exhaust F/QuietPro (includes: #28, 29)	1 set	16.22
	101678 50' Extension Cord (Not Shown)	1 ea.	31.05